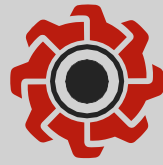


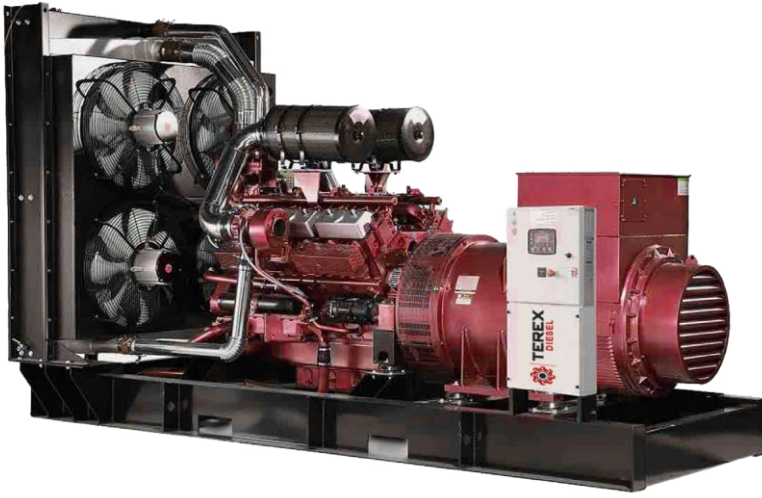
TRX-Q-46

Diesel Generator



TEREX

DIESEL



Generator Features:

- 4 stroke 1500 rpm water cooled heavy duty diesel engine
- Radiator capable of cooling up to 50 °C
- 4-pole synchronous type, single bearing, brushless alternator
- Flexible fuel hoses and oil drain valve
- Welded steel sheet, powder coated electrostatic powder coated chassis
- Dry type replaceable air filter
- MEngine jacket water heater
- Chassis integrated fuel tank
- Industrial type silencer
- Electronic battery charger
- Electric circuit diagram
- Operation and maintenance manual
- Manual start protection system
- Battery and cables

Prime Power

Limited time operating power under variable load. It is used as backup power in case of mains power outages. Overloads are not allowed.

Standby Power

Continuous operating power under variable load. According to ISO 3046 standard, 10% overload is allowed in 12 hours operation.

Jeneratör Özellikleri

		Prime	Stand-by
Power	kVA	41	46
Power	kW	30	33

Generator Model:	TEREX-Q / TRX-Q-46
Engine Model:	QZ4100D
Fuel Type:	Diesel
Frequency:	50 Hz
Power Factor:	Cos Φ = 0.8
Voltaj:	400/231 V

Dimensions		With Cabin	Without Cabin
Length	mm	2100	1600
Height	mm	1570	1350
Width	mm	1000	950
Weight	kg	1125	900
Fuel Tank Capacity	lt	105	120

H: Harici

K: Konteyner

TBA: to be added



TEREX

DIESEL



0850 532 63 20
Dudullu OSB Mah. İmes B Blok, 205.sk. No:31 Ümraniye/İstanbul

| www.terexgen.com.tr

TRX-Q-46

Diesel Generator



TEREX

DIESEL

Motor

Engine Brand		QUARTZ
Engine Modeli:		QZ4100D
Engine Type:		4 Stroke Diesel Engine
Engine Stan-by Power:	kWm	36,3
Engine Prime Power :	kWm	32
Cylinder Arrangement:		4L
Total Cylinder Arrangement	lt	3,875
Cooling Sytem:		Water
Broke-Stroke:	mm	102 x 118
Compression Ratio:		18:1
Aspiration:		Natural Aspiration
Governör Type:		Mechanic
Elektrical System:	VDC	12
Lubricant Oil Capacity:	lt	11,5
Coolant Capacity:	lt	14,5
Frequency Lt:	Hz - d/dk	50 - 1500
Jacket Water Heater:	quantity x W	1 x 500
Battery:	quantityx AH	1 x 60
Charge Alternator Current:	A	TBA
Injection System:		Direct
Cooling Air Flow:	m7/dk	75
Combustion Air Flow:	m7/dk	2,1
Exhaust Gas Flow:	m7/dk	5,9
Exhaust Gas Temperature:	°C	550
Fuel Consumption Under 100% Load:	lt/s	9,2
Fuel Consumption Under 75% Load:	lt/s	6,9
Fuel Consumption Under 50% Load:	lt/s	4,65

Alternetör

Phase / Pole Number:		3/4+
Excitation System:		Self Excited, Brushless
Voltage Regulator:		A. V. R. (Automatic)
Voltage Regulation:		±%1
Insulation Class:		H
Protection Class:		IP23
Connection Type:		Yıldız
Frequency:	Hz	50
Power Factor:		Cos Φ = 0,8
Total Harmonic Distortion (No Load):		< % 3.5
Output Voltage:	VAC	231/400

TBA: To be added



TEREX

DIESEL



0850 532 63 20
Dudullu OSB Mah. İmes B Blok, 205.sk. No:31 Ümraniye/İstanbul

| www.terexgen.com.tr

TRX-Q-46

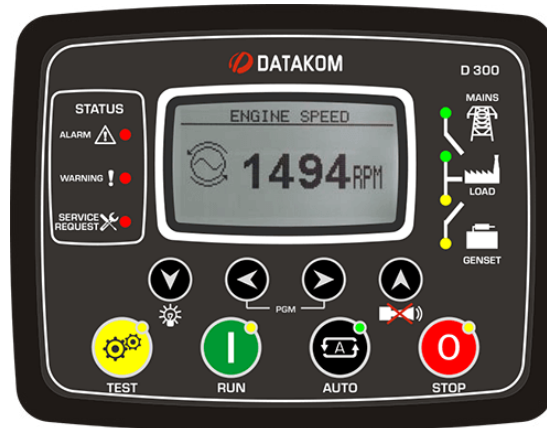
Diesel Generator



TEREX

DIESEL

Control Panel



Datakom D300

Datakom D300 Automatic Control Module

AMF function ATS function
Remote start function Manual start function Engine
control function
Suitable for remote monitoring

Mains and Genset LL– LN Voltages

Mains and generator frequency Mains and genset phase
currents Mains and generator neutral currents
Grid and generator phase and total, kW, kVA, kVAR Power
factor, engine speed, battery voltage and more

Connections

3 phase 4 wire, stars & delta
3 phase 3 wire, 2 current transformer
2 phase 3 wire
1 phase 2 wire

Communication

RS232 – 485 connection with cable J1939-CANBUS
GSM / GPRS connection Ethernet connection Modbus
RTU

Protection Functions

Overvoltage
Low voltage
Voltage asymmetry and phase sequence High frequency
Low frequency Short-circuit current Overcurrent
Power factor
Coolant temperature Low oil pressure

Auto Panel Features

Automatic generator, grid control and fault
monitoring Easy control with a user-friendly interface from
the panel screen

Remote operation with optional communication
cards Manual programming with password-protected
service interface

Manual control of generator and transfer panel with
buttons on the front panel

Front panel protection class IP65

With an operating temperature of -20 C to +70 C and a
storage temperature of -40 C to +80 C



TEREX

DIESEL



0850 532 63 20
Dudullu OSB Mah. İmes B Blok, 205.sk. No:31 Ümraniye/İstanbul

| www.terexgen.com.tr